



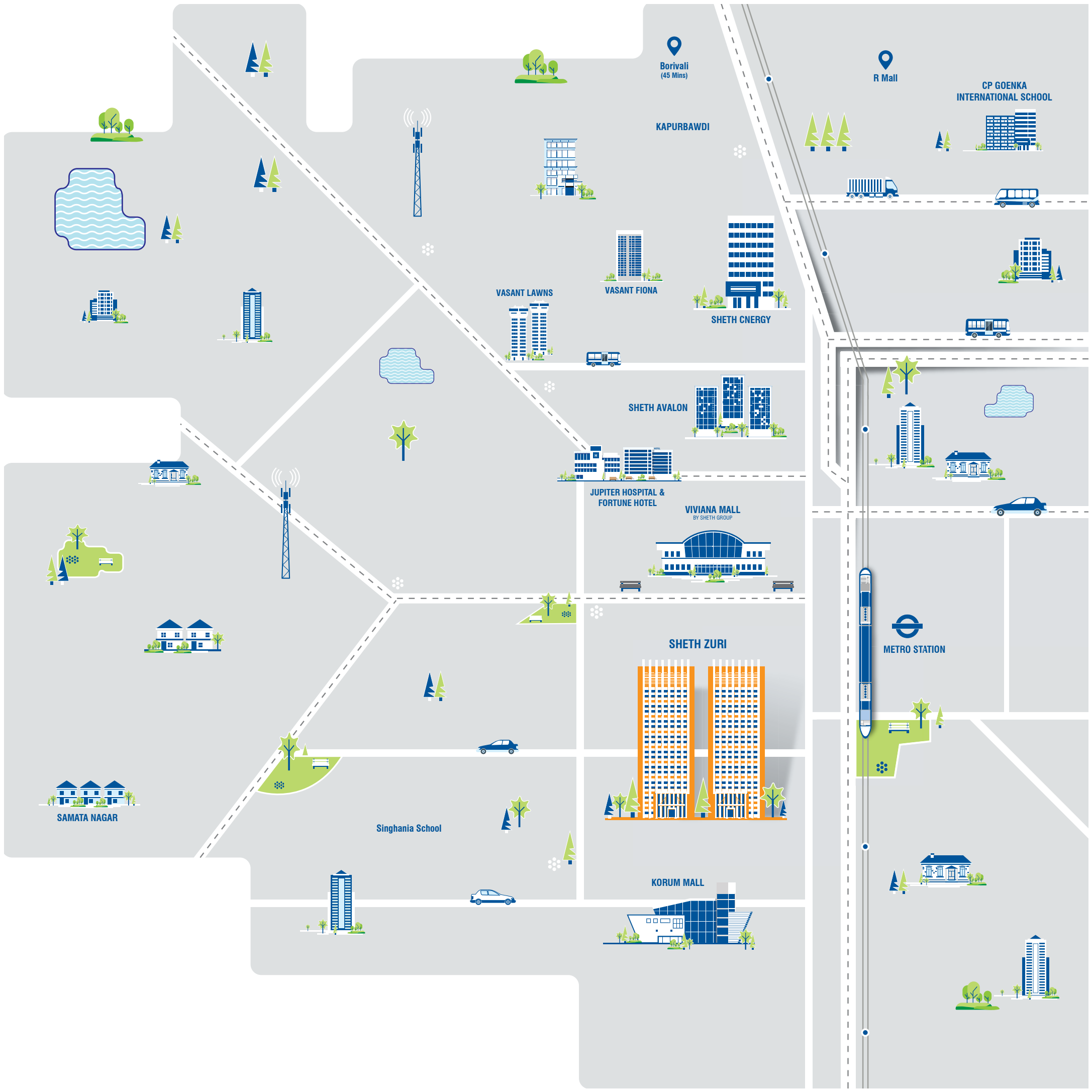
BEGIN YOUR  
EXTRAORDINARY STORY



# WHERE PROMINENT LOCATION BRINGS THE WORLD AT YOUR DOORSTEP

Begin your extraordinary story at Thane's ever growing destination. Renowned brands, superfast connectivity and everything else you need for daily life, here nothing falls short. Thane combines the perks of the city's phenomenal life and tranquillity of serene nature. It has flyovers, highways and wide roads to make your commute easier. The city is crowned with the best-in-class residential developments, socializing avenues, malls, IT parks, schools and hospitals.





Borivali  
(45 Mins)

R Mall

CP GOENKA  
INTERNATIONAL SCHOOL

KAPURBAWDI

VASANT LAWNS

VASANT FIONA

SHETH CNERGY

SHETH AVALON

JUPITER HOSPITAL &  
FORTUNE HOTEL

VIVIANA MALL  
BY SHETH GROUP

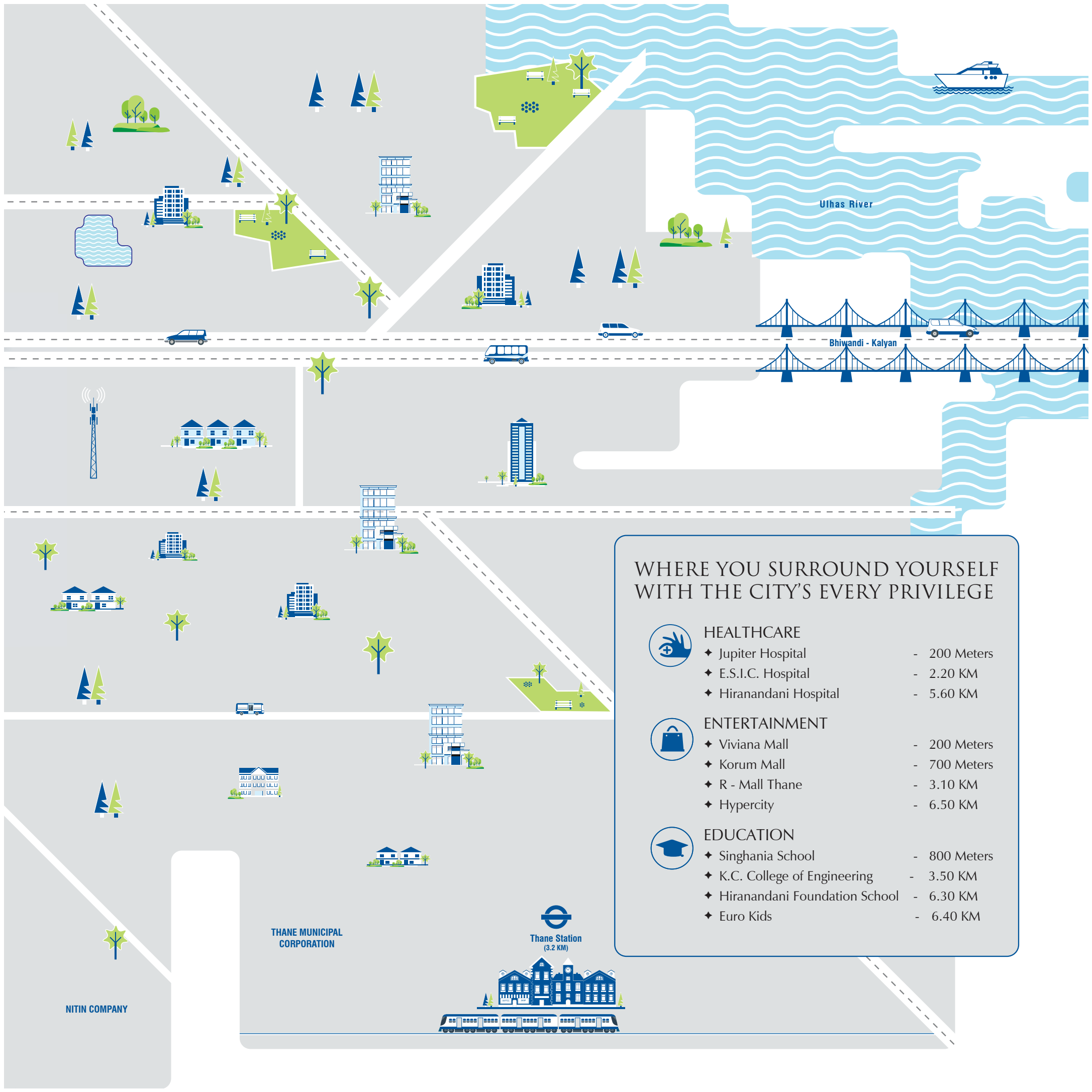
SHETH ZURI

METRO STATION

SAMATA NAGAR

Singhania School

KORUM MALL



Ulhas River

Bhiwandi - Kalyan

THANE MUNICIPAL CORPORATION

Thane Station  
(3.2 KM)

NITIN COMPANY

## WHERE YOU SURROUND YOURSELF WITH THE CITY'S EVERY PRIVILEGE



### HEALTHCARE

- ◆ Jupiter Hospital - 200 Meters
- ◆ E.S.I.C. Hospital - 2.20 KM
- ◆ Hiranandani Hospital - 5.60 KM



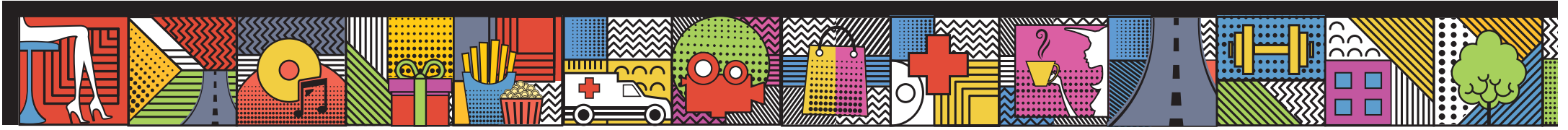
### ENTERTAINMENT

- ◆ Viviana Mall - 200 Meters
- ◆ Korum Mall - 700 Meters
- ◆ R - Mall Thane - 3.10 KM
- ◆ Hypercity - 6.50 KM



### EDUCATION

- ◆ Singhania School - 800 Meters
- ◆ K.C. College of Engineering - 3.50 KM
- ◆ Hiranandani Foundation School - 6.30 KM
- ◆ Euro Kids - 6.40 KM



# THANE'S PLATINUM BELT

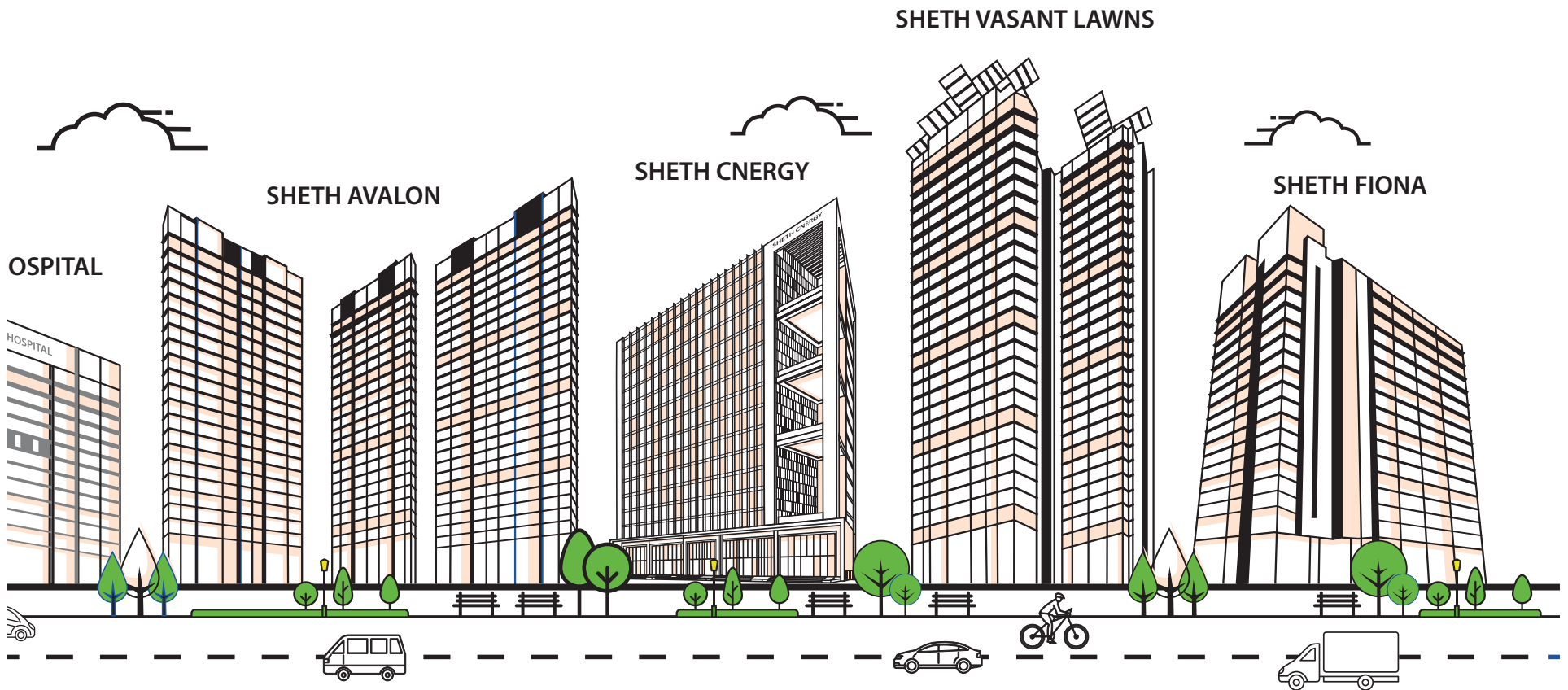
RESIDENTIAL | RETAIL | COMMERCIAL





## WHERE YOU EXPERIENCE THE BEST SIDE OF THANE

Thane's Platinum Belt is a gateway to Sheth Group's premium living experiences, crafted to fulfil a million aspirations at one single stretch. Here, you can treasure unforgettable moments every day, pursue your hobbies, socialize, or give head to your aspirations. Moreover, this exclusive world is encircled by the city's renowned restaurants, reputed schools, entertainment zones and everything you need to make life truly extraordinary.



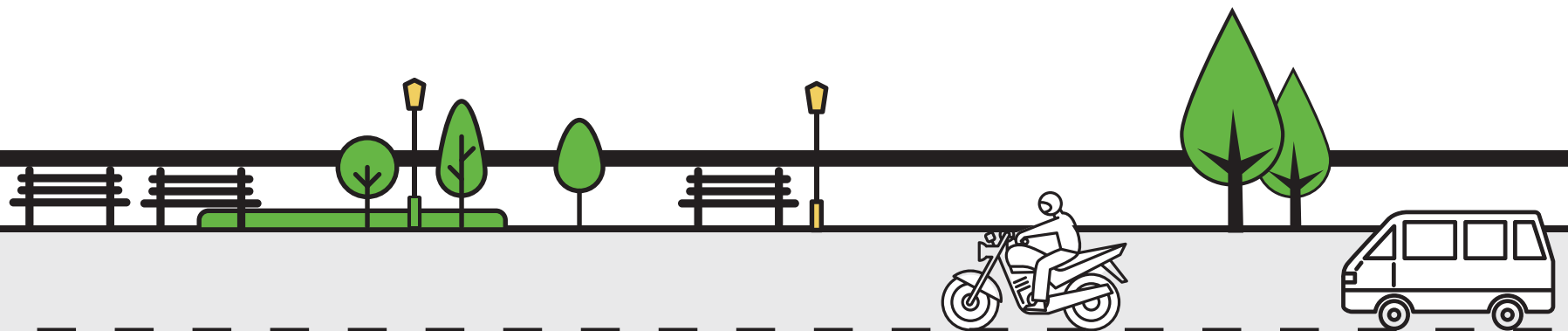
# ZURI

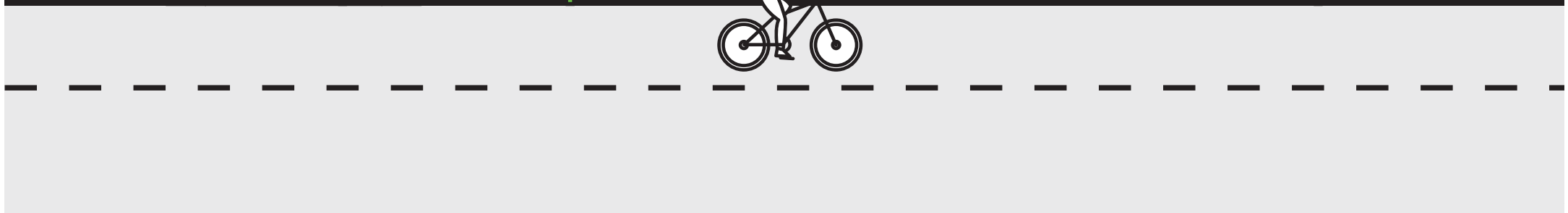
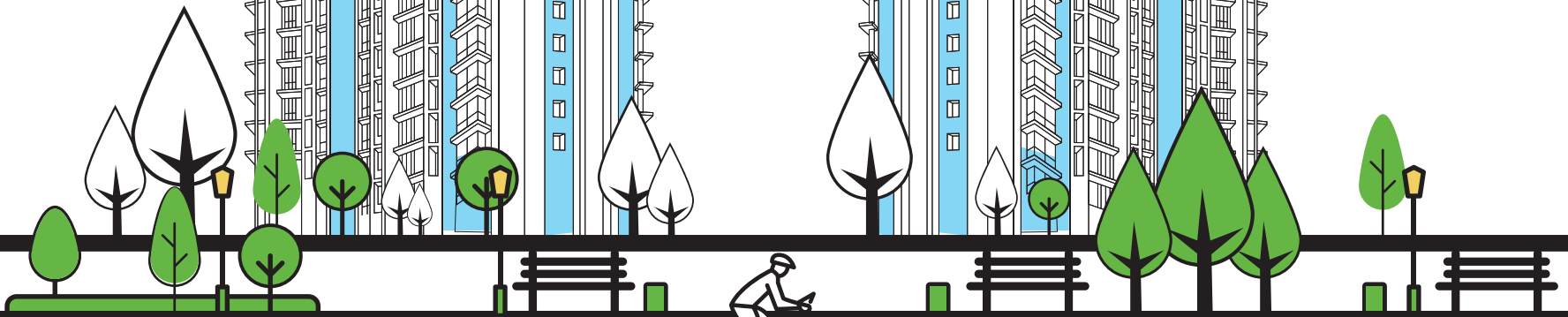
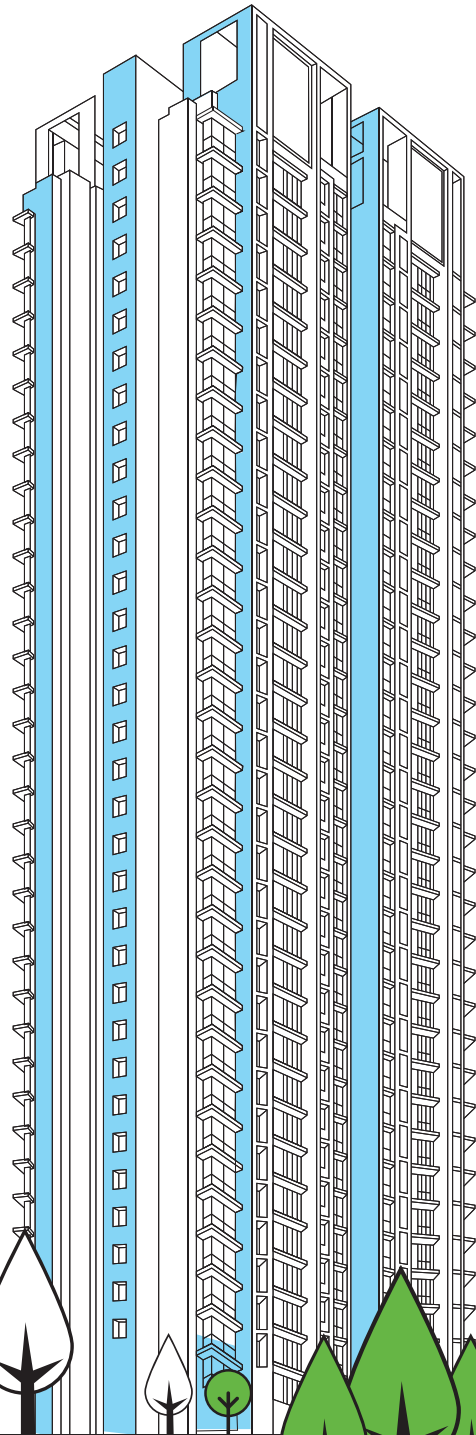
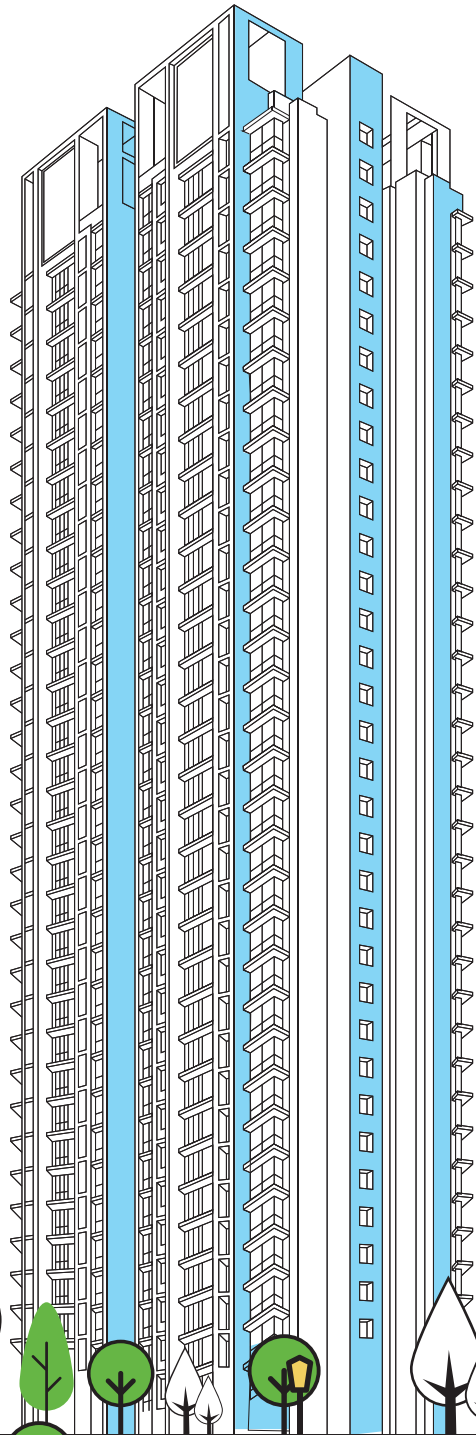
**2 & 3 BHK HOMES**  
**NEXT TO VIVIANA MALL**

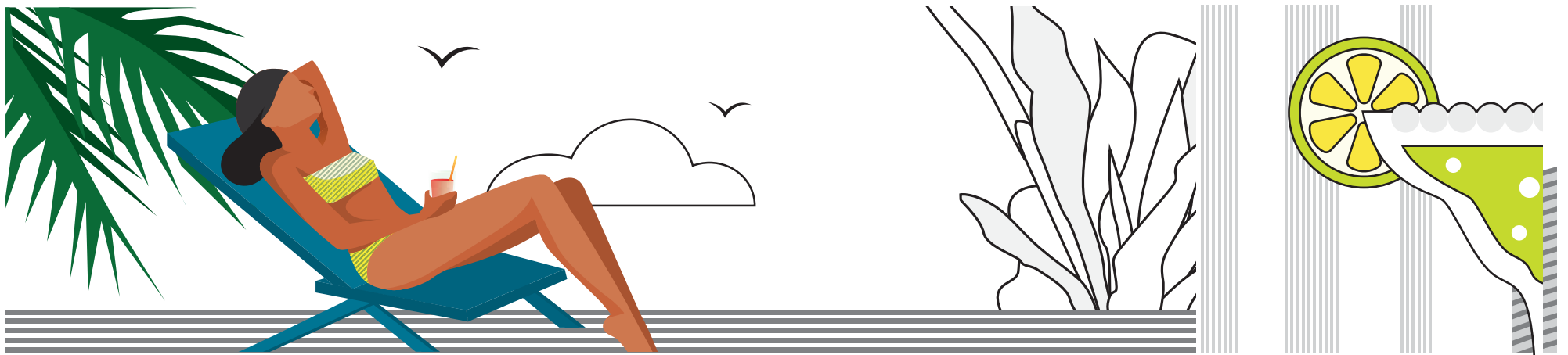
## YOUR EXTRAORDINARY STORY

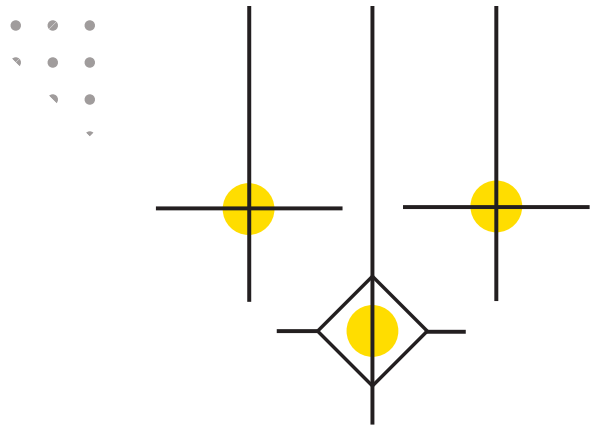
At Sheth Zuri, you will experience life in its finest form. Thoughtfully designed lifestyle features, superfast connectivity of the Eastern Express Highway and the presence of Viviana Mall in the neighbourhood, here everything is positioned to elevate your lifestyle.

- 1 3 aesthetically planned towers of 33 storeys
- 2 Privacy focussed 2 and 3 bedroom residences
- 3 Zero negative space planning
- 4 Cross ventilated apartments with natural light and breeze from all corners
- 5 18 indoor & outdoor activities



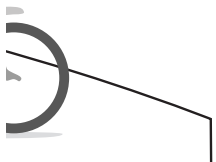






WHERE YOU CREATE  
UNFORGETTABLE STORIES  
EVERY DAY

18 indoor and outdoor activities

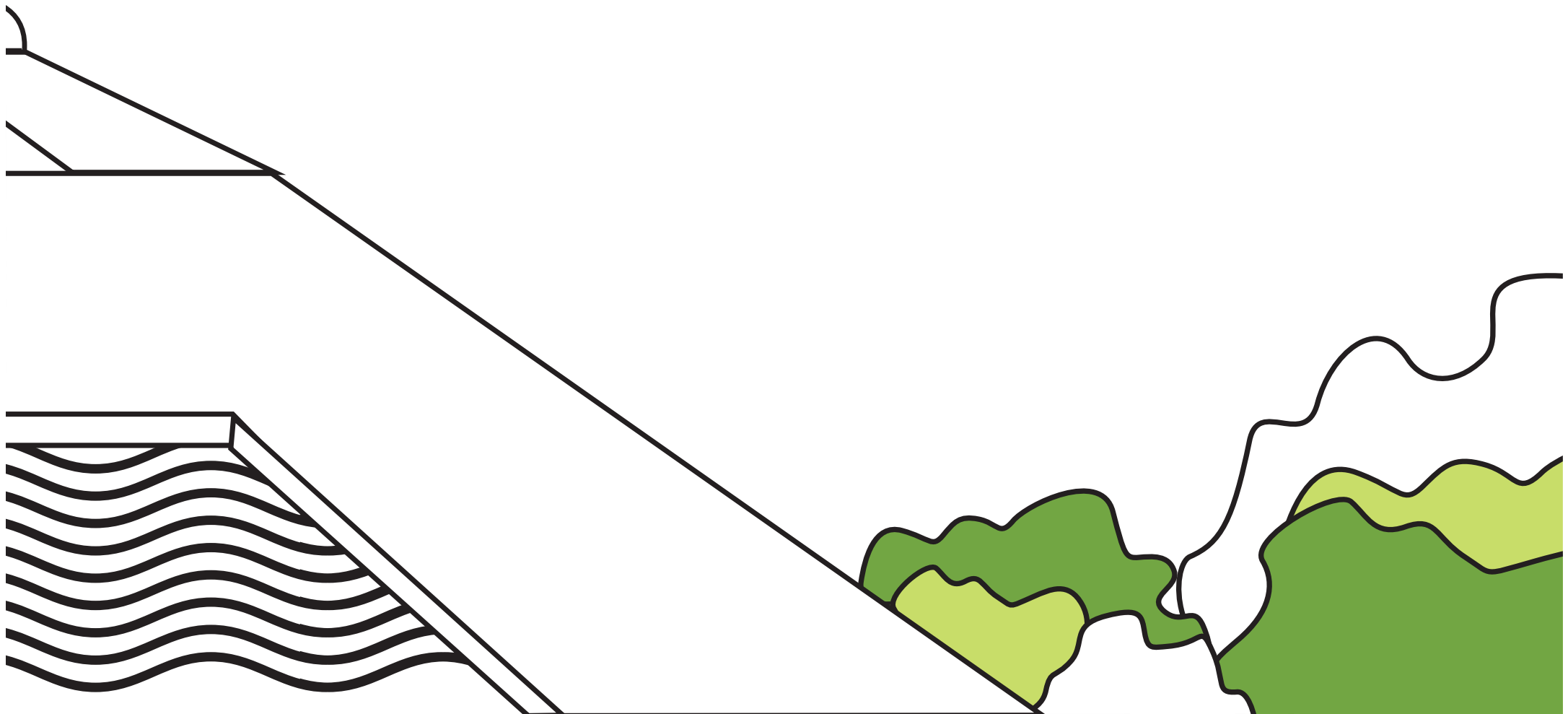


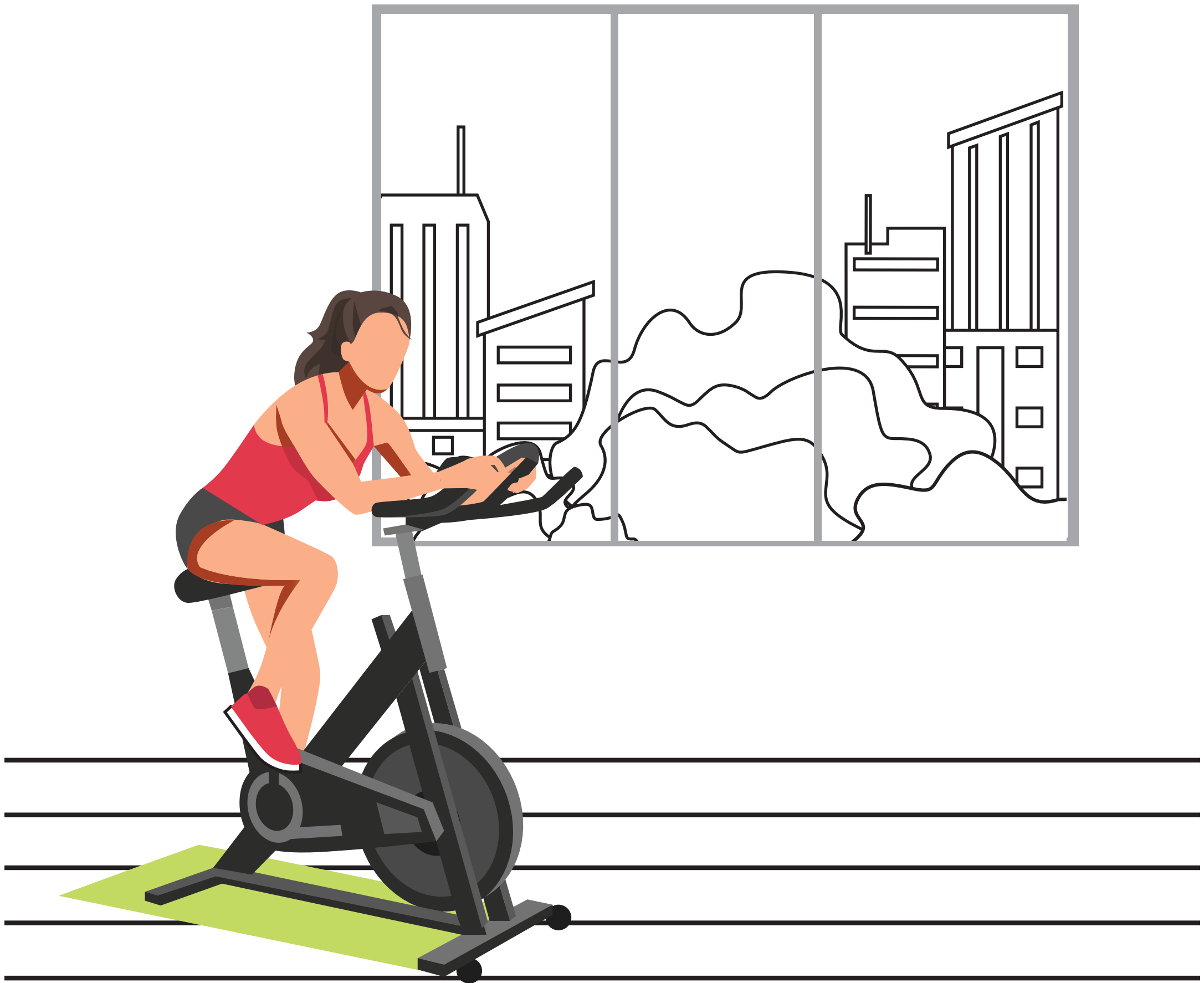


# A HEALING THERAPY AFTER A TIRING DAY

## Leisure

Main Pool | Kid's Pool | Pool Deck | Steam Room | Lounge Area | Reading Lounge

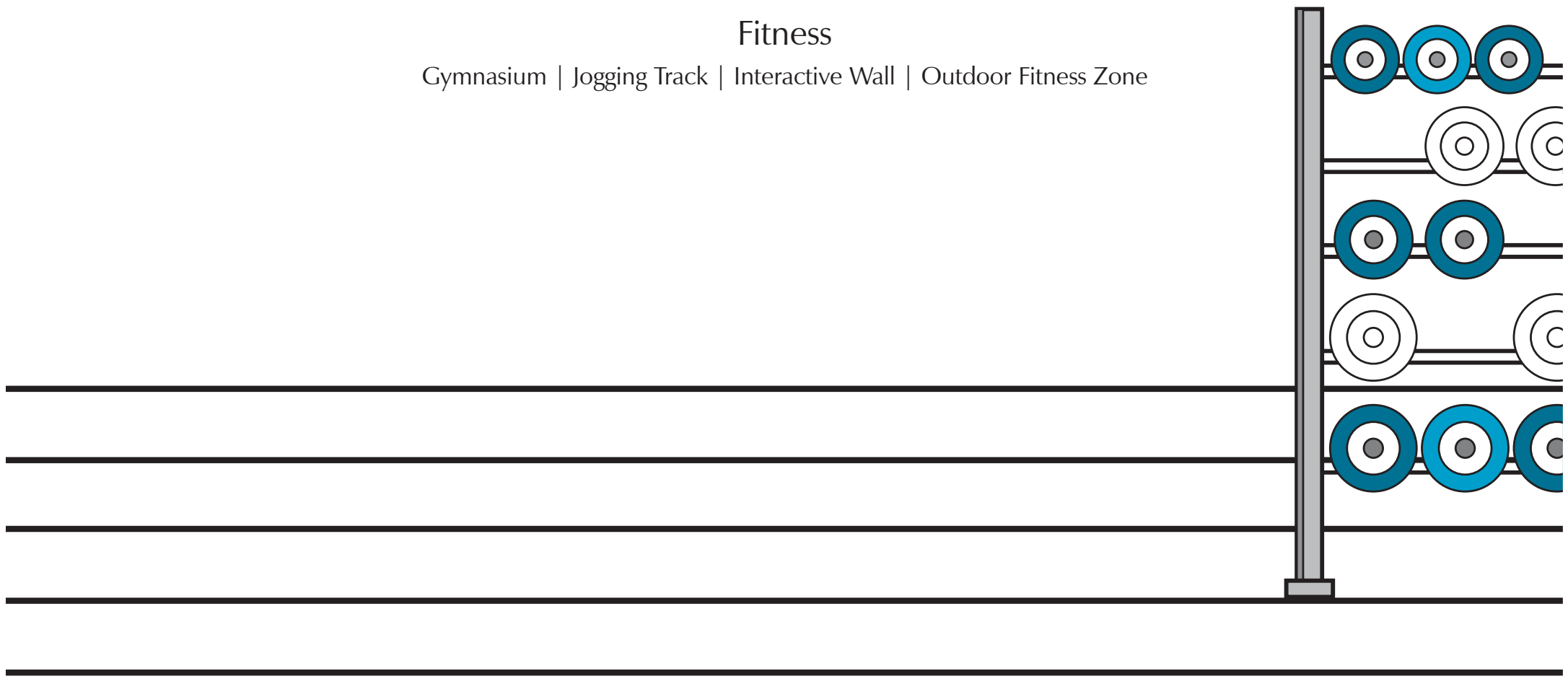




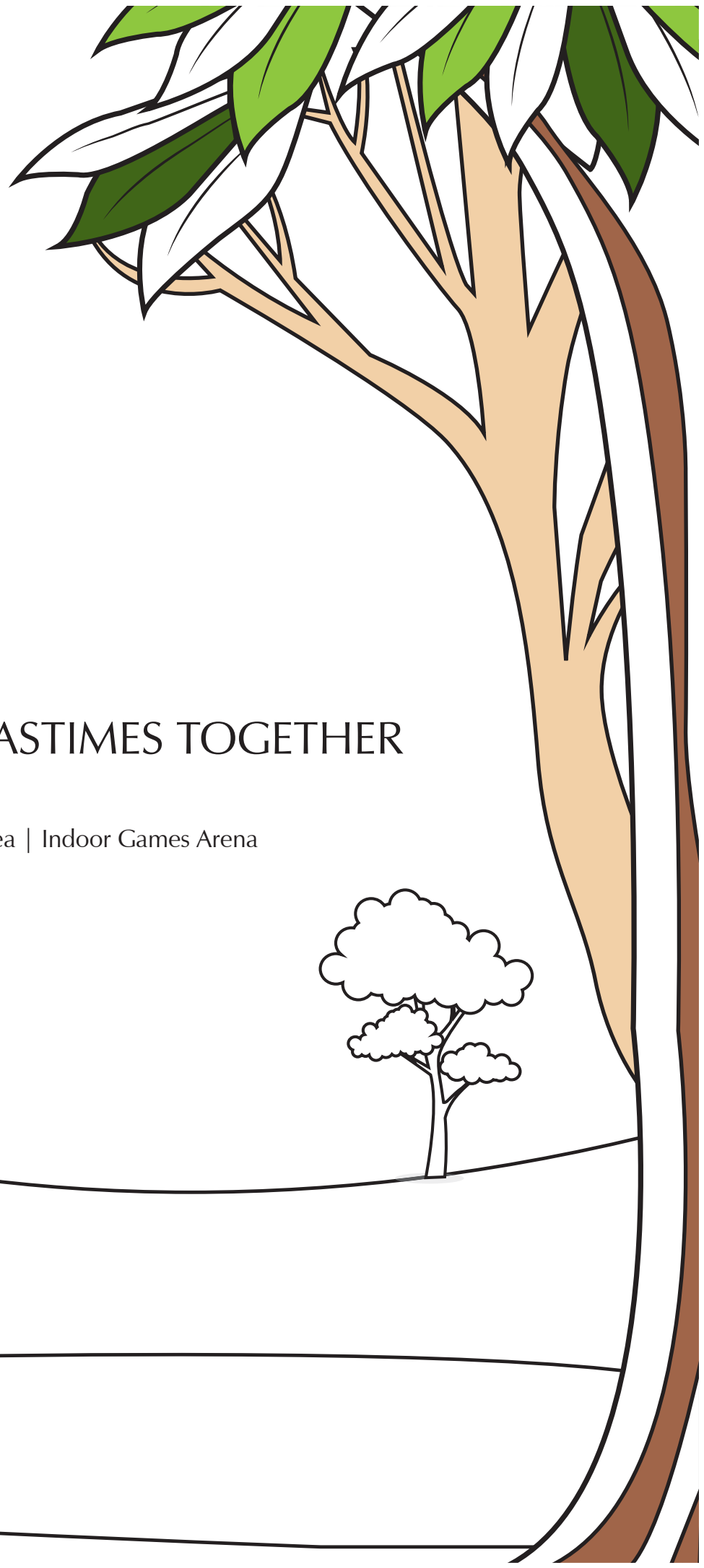
# A REJUVENATING WORKOUT FOR A HEALTHIER YOU

Fitness

Gymnasium | Jogging Track | Interactive Wall | Outdoor Fitness Zone



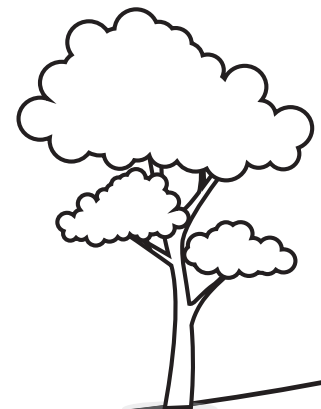


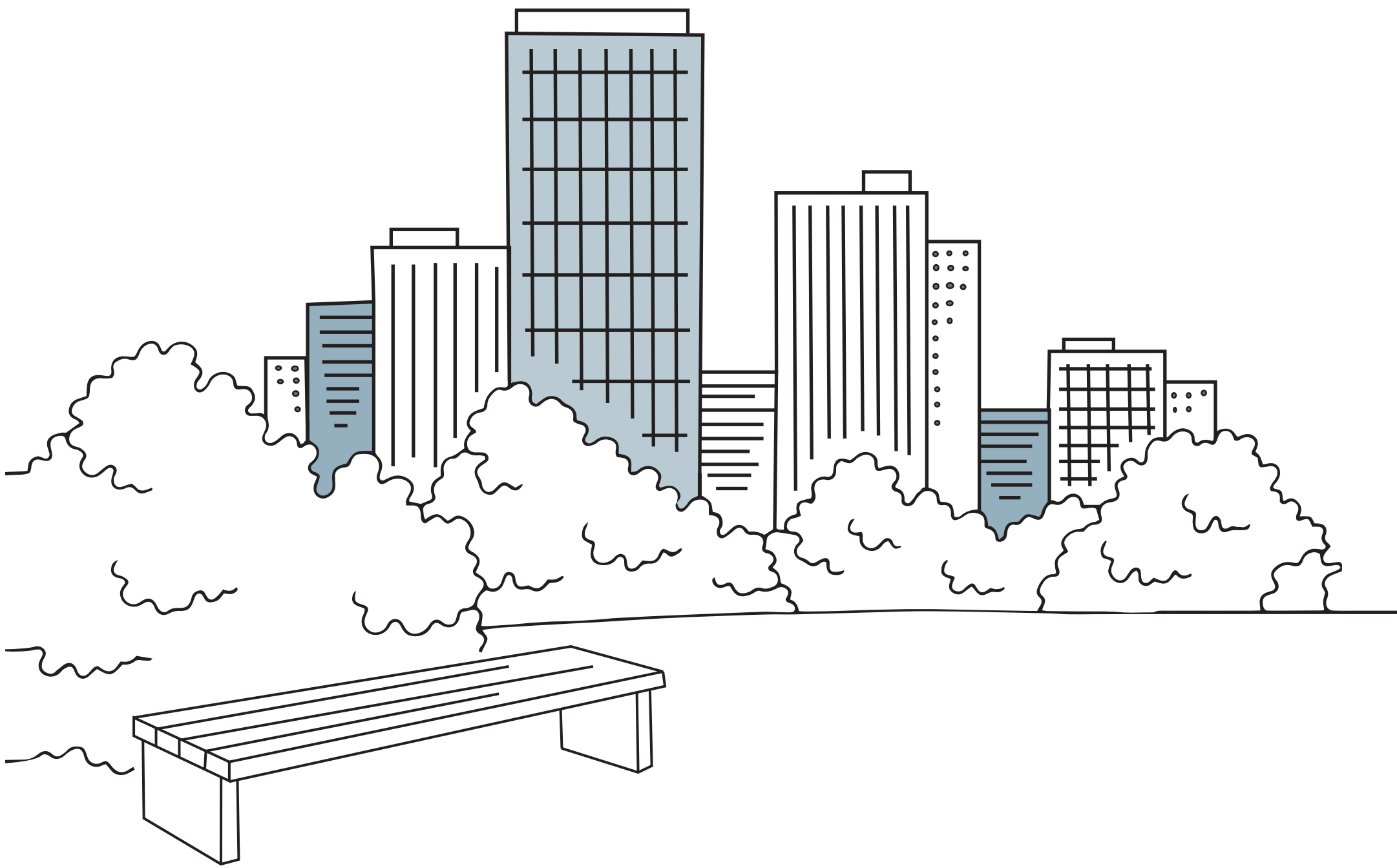


# RELISH YOUR FAVOURITE PASTIMES TOGETHER

## Recreation

Senior Citizen's Area | Children's Play Area | Indoor Games Arena

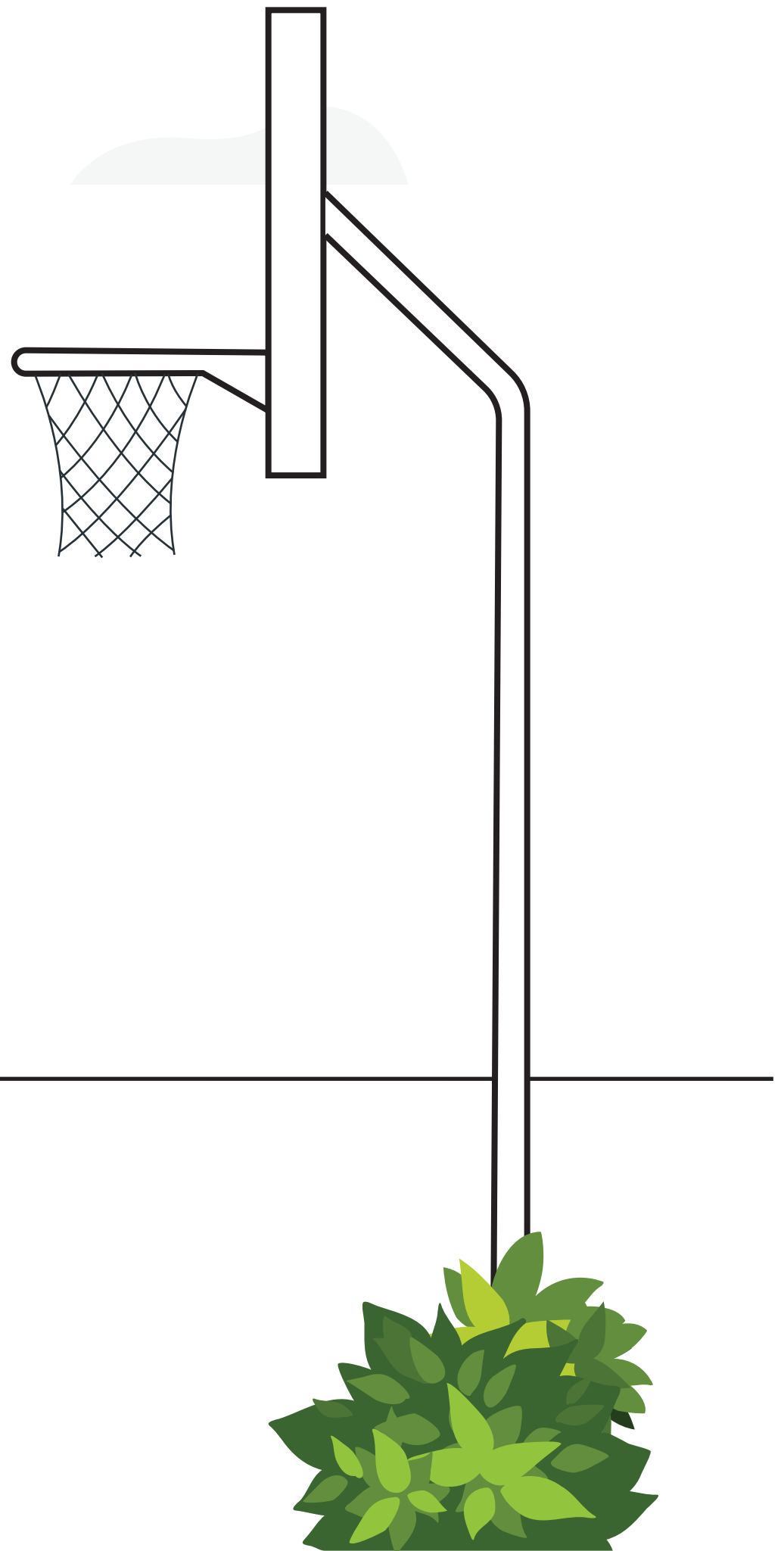
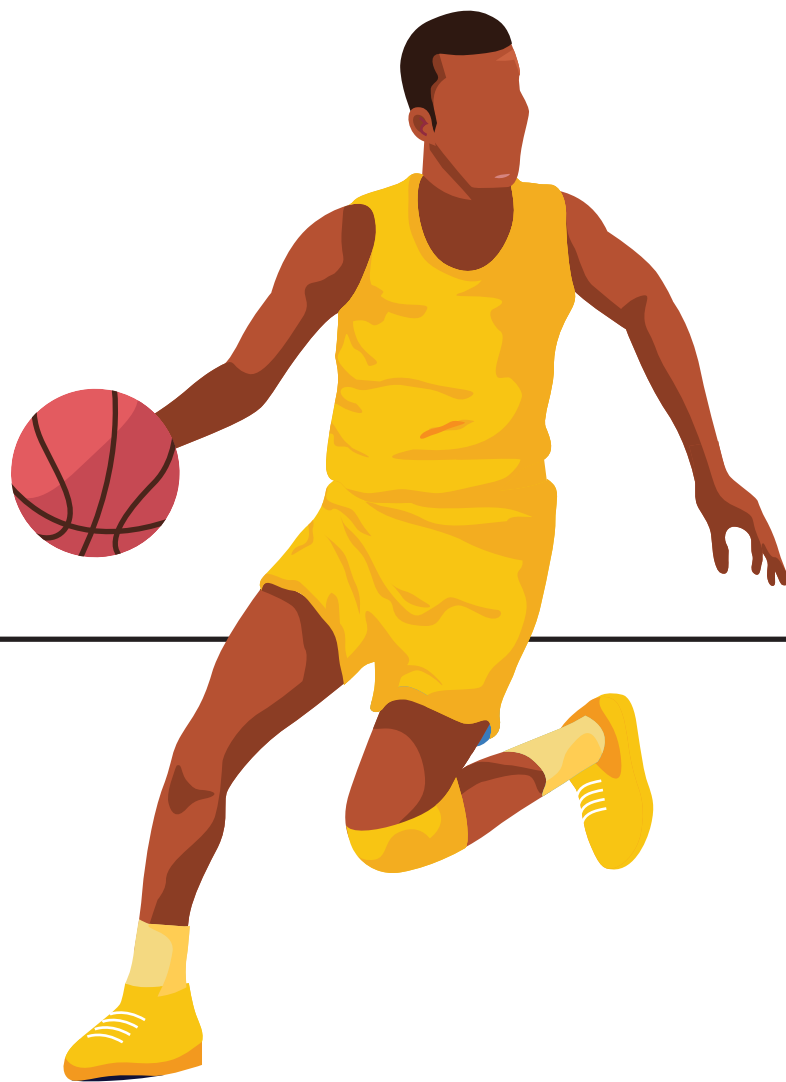




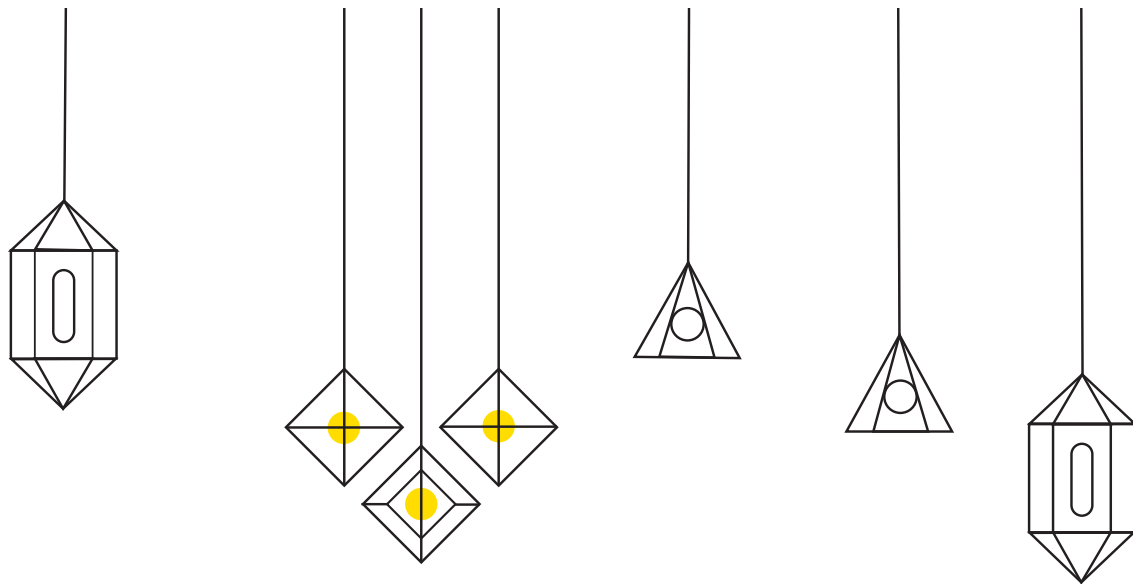
# A GRAND PLATFORM TO PURSUE YOUR HOBBIES

Sports

Cricket Pitch | Basketball Court



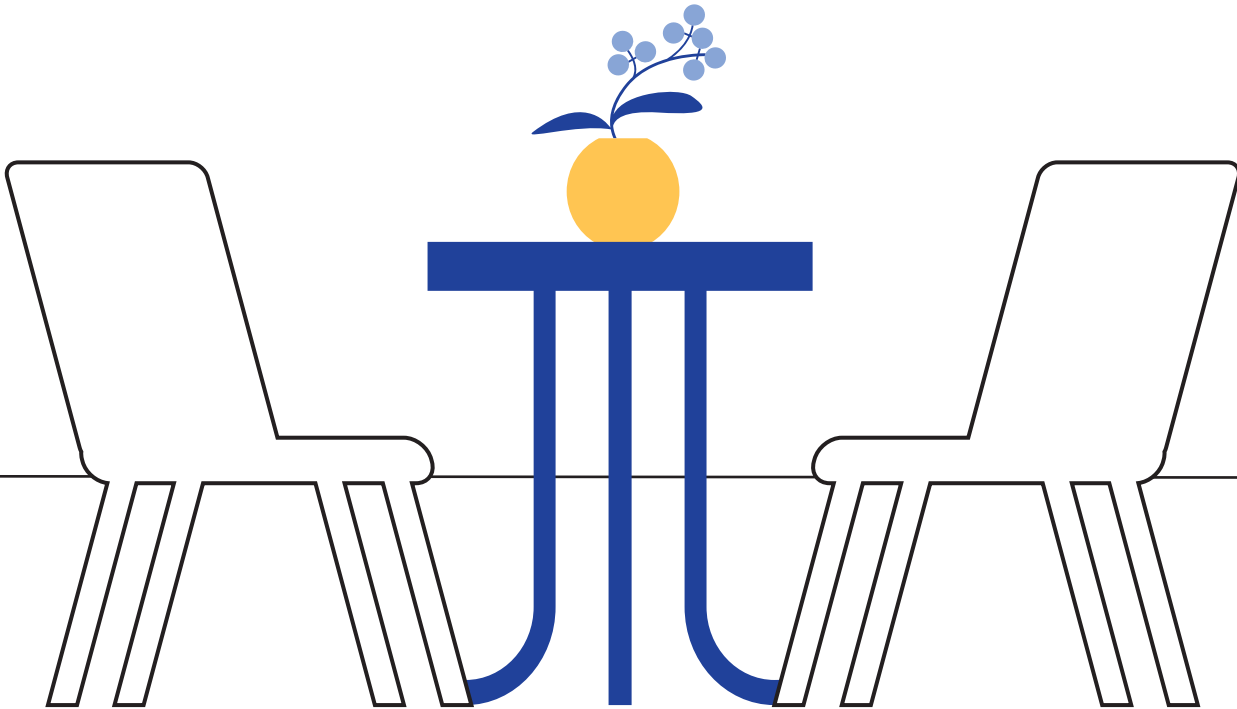


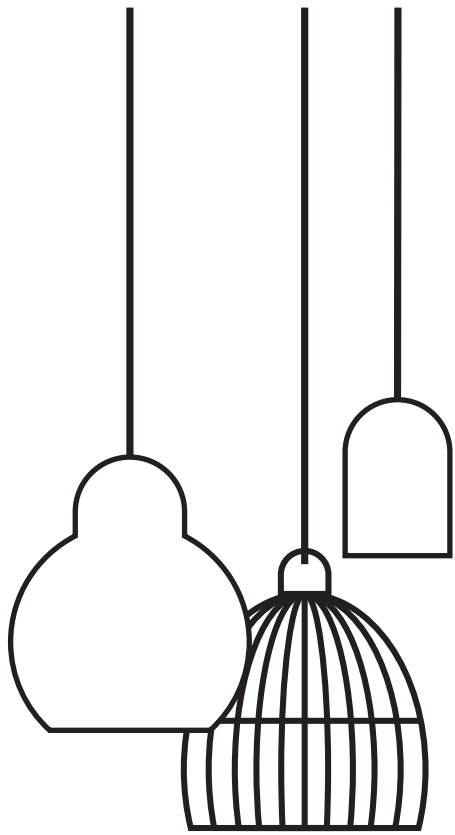


# AVENUES TO MAKE EVERY CELEBRATION MEMORABLE

## Entertainment

Amphi-seating | Party Lawn | Multipurpose Hall

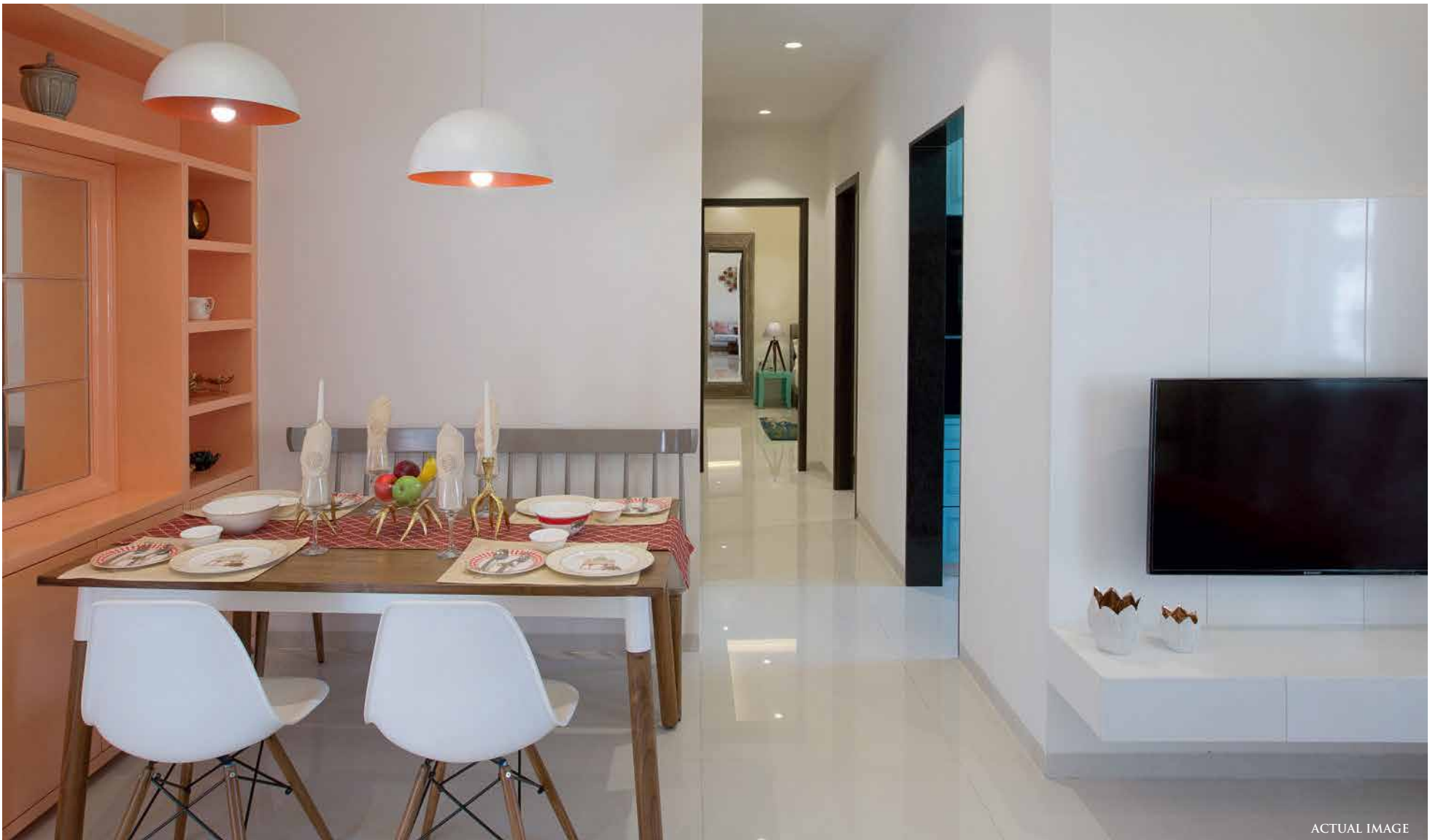




# WHERE EVERY CORNER LEAVES A LASTING IMPRESSION

Every residence makes use of zero negative space planning method that accentuates every square inch of space with distinct utility. Designed to offer various configurations in acreage, Sheth Zuri is aimed to cater to a wide array of home buyers who are looking for modern living spaces that offer a unique lifestyle, tailored to their preferences.

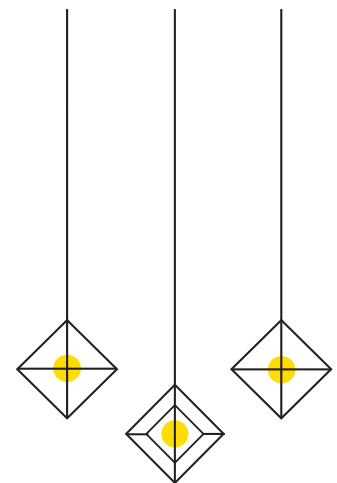




ACTUAL IMAGE



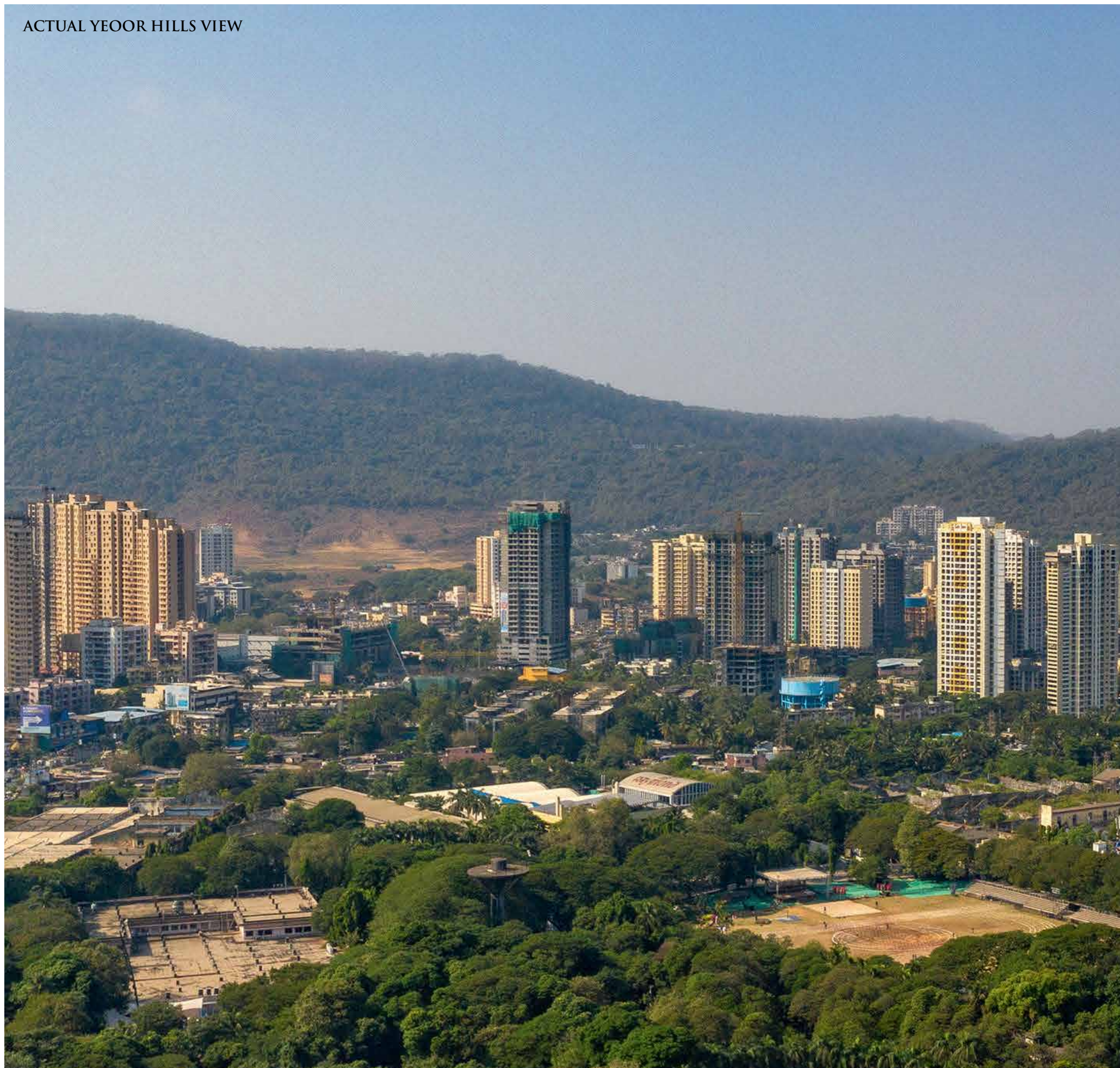
ACTUAL IMAGE

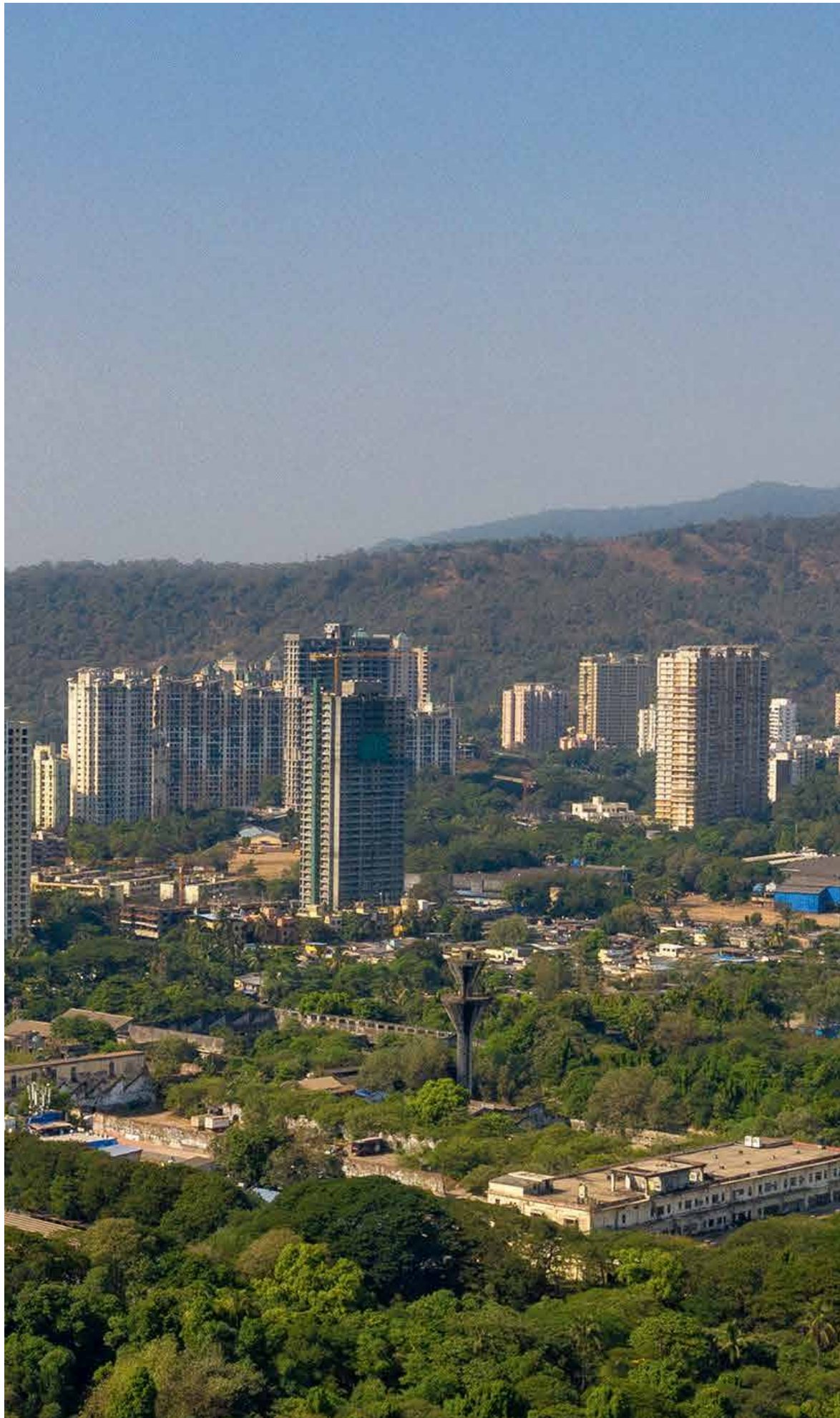


# EXPERIENCE THE SHEER ELEGANCE OF RESIDING IN SHETH ZURI



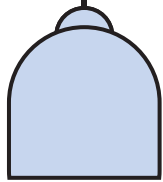
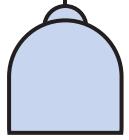
ACTUAL YEOOR HILLS VIEW





GET MESMERIZED  
BY UNINTERRUPTED  
CITYSCAPE VIEWS





## INTERNAL SPECIFICATION

### Living & dining

- Vitrified flooring
- Extensive electrical layout
- Windows with granite sill
- Cable point
- Landline phone point
- AC points as per well-laid routing provision
- Intercom facility

### Kitchen

- Vitrified flooring
- Granite platform with stainless steel sink
- Gas leak detector and provision for piped gas connection
- Extensive electrical layout with points for water purifier refrigerator

### Study room

- Vitrified flooring
- Extensive electrical layout
- Windows with granite or marble sill
- Cable point
- Landline phone point
- AC points as per well-laid routing provision

### Bedroom

- Vitrified flooring
- Extensive electrical layout
- Windows with granite sill
- Cable point
- Landline phone point
- AC points as per well-laid routing provision

### Bathrooms

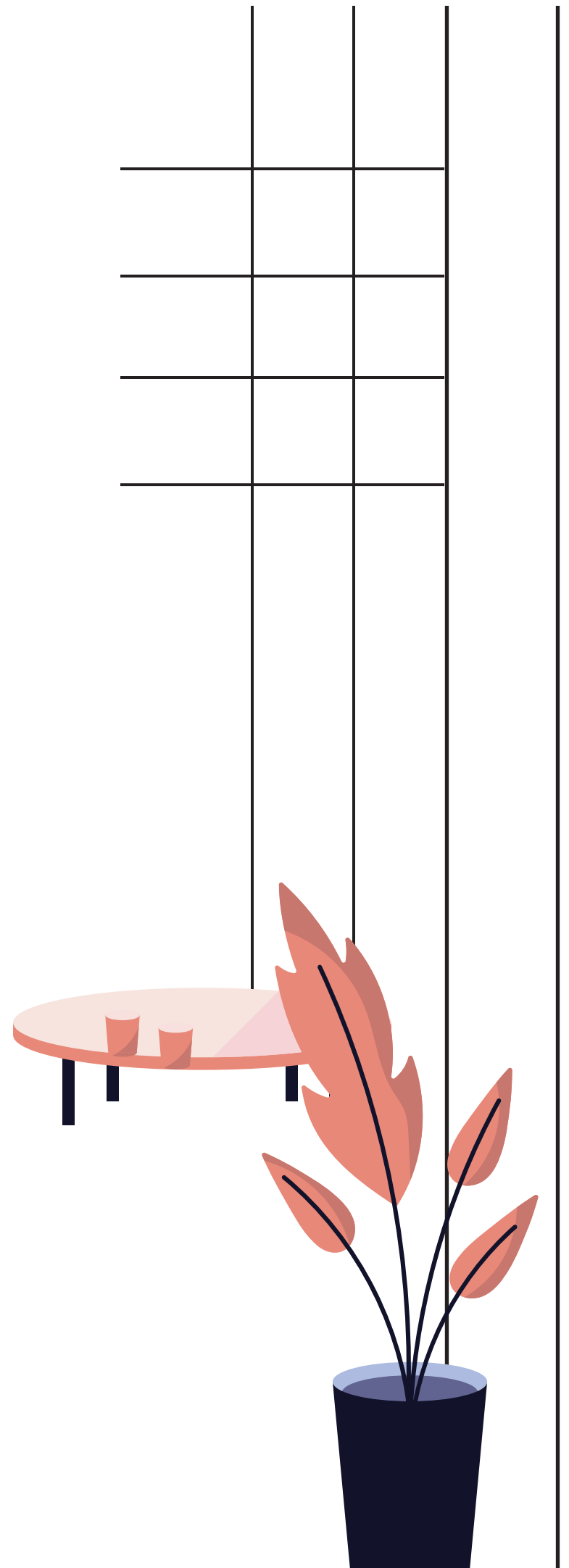
- Ceramic anti-skid flooring
- Glazed dado tiles
- High quality sanitary ware & CP fittings
- Extensive electrical layout with point for exhaust & geyser

### Electricals

- Extensive layout in concealed copper wiring
- Modular switches in every flat
- Provision for lights & fans
- TV points

### Windows

- Heavy aluminium powder-coated sections with granite sills
- Internal wall finish
- Gypsum plaster
- Lustre paint in living, dining room & passage





## LEGENDS

- 01) Main Pool
- 02) Kid's Pool
- 03) Children's Play Area
- 04) Clubhouse
  - A- Gym
  - B- Indoor Games Arena
  - C- Multipurpose Hall & Podium
  - D- Steam Room
- 05) Pool Deck
- 06) Amphi-seating
- 07) Party Lawn
- 08) Lounge Area
- 09) Outdoor Fitness Zone
- 10) Senior Citizen's Area
- 11) Jogging Track
- 12) Reading Lounge
- 13) Interactive Wall
- 14) Cricket Pitch
- 15) Basketball Court



12

TOWER E

TOWER F

03

TOWER D

TOWER C

11

08

02

01

05

04

13

06

07

09

14

10

15

TOWER B

TOWER A

N



ashwin sheth  
our world reflects your world

Site Address: Sheth Zuri, Beside Viviana Mall, Thane's Platinum Belt, Eastern-Express Highway, Thane (W) – 400606.

Call: 90719 96803 | Email: [sales@shethdevelopers.com](mailto:sales@shethdevelopers.com) | Website: [www.ashwinshethgroup.com](http://www.ashwinshethgroup.com)



The project has been registered via MahaRERA registration number: RERA P51700007274 and is available on the website <https://maharera.mahaonlin.gov.in> under registered projects.

Disclaimer: Offers valid for limited period, and any changes mentioned in the offers are at the sole discretion of the Company. This ad is purely conceptual and is strictly provided for representative and illustrative purposes. Distance and timelines are tentative and approximate subject to road and infrastructure facilities provided by the appropriate authorities. List of amenities, specifications, designs and facilities provided in the agreement for sale shall stand final and binding. \*Taxes as applicable. T&C Apply.